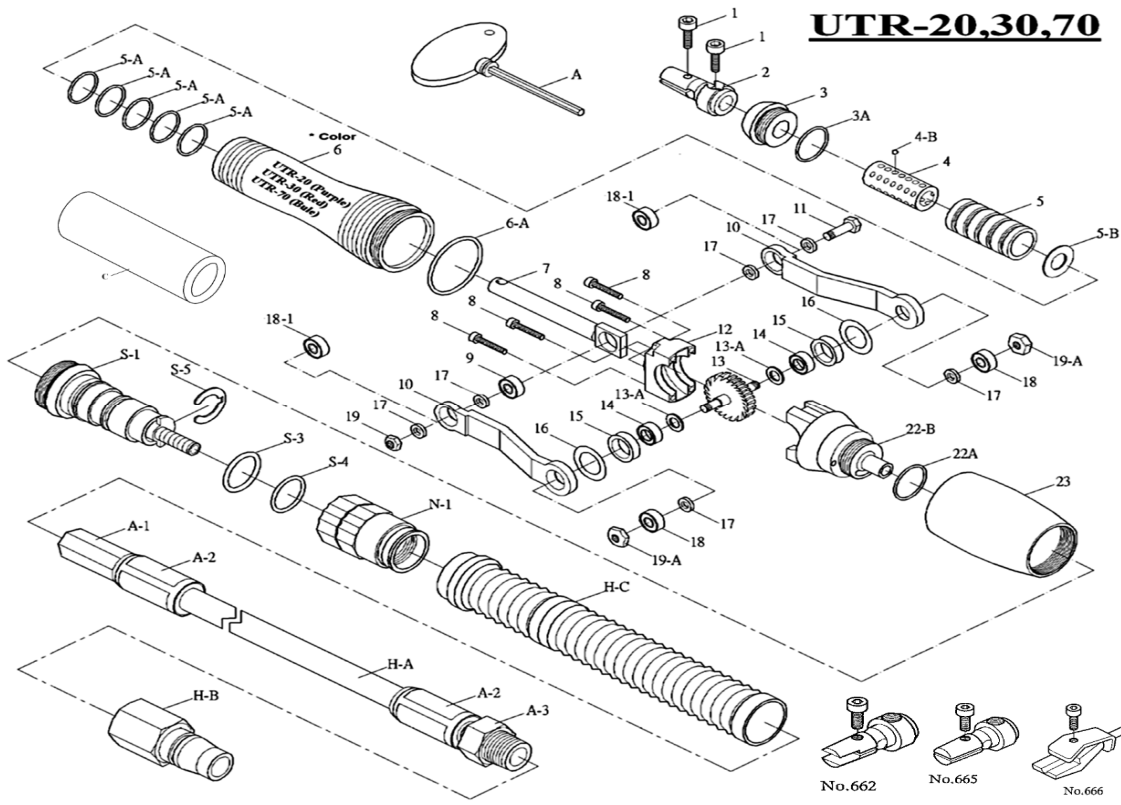


U-LAP 30/70 Parts List



| U-LAP 30/70 PARTS | | | | | | | |
|-------------------|-------------|----------------------------------|---------|------|-------------|------------------------|---------|
| No | Order No | Description | Price | No | Order No | Description | Price |
| A | 09P-LAP0001 | Hex Wrench | \$2.10 | 13 | 09P-LAP0069 | Turbine (ULap 30 Only) | \$25.00 |
| 1 | 09P-LAP0002 | Set Screws (2Pk) | \$2.10 | 13-A | 09P-LAP0021 | Copper Washer | \$1.25 |
| 2 | 09P-LAP0003 | 3mm Tip Holder | \$10.00 | 14 | 09P-LAP0022 | Bearing | \$16.25 |
| 3 | 09P-LAP0004 | Front Cover | \$10.00 | 15 | 09P-LAP0023 | Bearing Fixer | \$15.50 |
| 3-A | 09P-LAP0005 | O-Ring | \$1.00 | 16 | 09P-LAP0024 | O-Ring | \$1.70 |
| 4 & 4B | 09P-LAP0067 | Fixed Ball & Bushing U-Lap 30/70 | \$18.65 | 18 | 09P-LAP0026 | Bearing | \$14.16 |
| 5 | 09P-LAP0009 | Sliding Bushing | \$7.15 | 19 | 09P-LAP0027 | Nut | \$1.70 |
| 5-A | 09P-LAP0010 | O-Ring | \$4.00 | 19-A | 09P-LAP0028 | Nut | \$1.00 |
| 5-B | 09P-LAP0011 | Washer | \$1.00 | 22-A | 09P-LAP0029 | O-Ring | \$1.00 |
| 6 | 09P-LAP0012 | Front Body (ULap 70 Only) | \$48.00 | 22-B | 09P-LAP0030 | Air Inlet Body | \$16.25 |
| 6 | 09P-LAP0068 | Front Body (ULap 30 Only) | \$48.00 | 23 | 09P-LAP0031 | Rear Turbine Cab Set | \$35.00 |
| 6-A | 09P-LAP0013 | O-Ring | \$1.00 | S-1 | 09P-LAP0032 | Switch Body | \$10.00 |
| 7 | 09P-LAP0014 | Mainshaft | \$19.00 | S-3 | 09P-LAP0033 | O-Ring | \$1.00 |
| 8 | 09P-LAP0015 | Screw (4 Pk) | \$8.72 | S-4 | 09P-LAP0034 | O-Ring | \$1.00 |
| 9 | 09P-LAP0016 | Bearing | \$11.75 | S-5 | 09P-LAP0035 | C-Ring | \$1.45 |
| 10-B | 09P-LAP0070 | Plastic Crank Set* | \$18.00 | N-1 | 09P-LAP0036 | On-Off Control | \$11.75 |
| 11 | 09P-LAP0018 | Bolt | \$6.50 | H-A | 09P-LAP0037 | Air Hose Set | \$12.40 |
| 12 | 09P-LAP0019 | Front Turbine Cab | \$4.00 | H-B | 09P-LAP0038 | Quick Joint | \$2.90 |
| 13 | 09P-LAP0020 | Turbine (ULap 70 Only) | \$25.00 | H-C | 09P-LAP0039 | Muffler Pipe | \$4.90 |

* Plastic Crank Set includes Plastic Crank (#10), Bearing (#18-1) & Washer (#17) Parts not sold separately.